

**AMM**

***Analog Multi  
Meters***



**3004 Hi TESTER (33K $\Omega$ /V)**

**3007 Hi TESTER (33K $\Omega$ /V)**

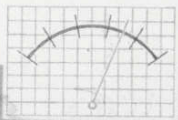
**3009 Hi TESTER (50K $\Omega$ /V)**

**3010 Hi TESTER (100K $\Omega$ /V)**

**3011 Hi TESTER (40K $\Omega$ /V)**

**3015 Hi TESTER (20K $\Omega$ /V)**

**3080 ELECTRONIC TESTER**




**NISHIZAWA ELECTRIC METERS MANUFACTURING CO.,LTD.**

# ELECTRICAL TOOLS

## MULTI METERS

**WARNING**



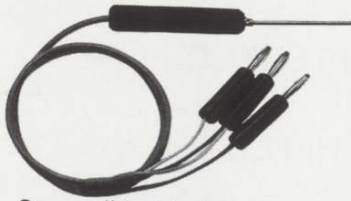
In some cases, power lines may carry voltage spikes of several times the normal supply voltage. For reasons of safety, ordinary testers should not be used to measure power lines carrying more than 250V. When measuring such power lines, always use a tester with built-in overcurrent protection to guard against short circuits.

Note: The term "power line" refers to the entire electrical circuit providing power to factories, buildings and industrial machines. However, it does not include electrical circuits in ordinary dwellings (lines protected by fuses or circuit breakers).

**9090-01**  
Probe (with Fuse Protection)

**Compatible Models**  
9090-01 : 3004, 3007, 3009, 3010, 3011, 3015, 3080

**9021-01**  
THERMISTER TEMPERATURE PROBE



**Compatible Models**  
9021-01 : 3007, 3015, 3021  
● -50°C to 200°C can be measured

**CARRYING CASE**

The carrying case will help protect the unit from damage if it is subjected to shock, such as by accidental dropping, as well as preventing scratches and dust.

\* Depending on the specific item, it is often more advantageous to purchase the case together with the instrument itself. Refer to the price information for each product.

Model	Compatible Models
9051	3007
9085	3004 · 3009 · 3010 · 3011 · 3080
9088 *	3015
9144 *	3015

**FUSE**

0.5A/250Vφ6.4×30
0.5A/250Vφ6.4×30 (non arcing type)
2A/250Vφ6.4×30 (non arcing type)
15A/250Vφ6.4×30 (non arcing type)

**3004**

33kΩ/V



**3007**

33kΩ/V



**VOM with Capacitance Measurement**

- Provided with capacitance function.
- Measures transistors hFE.
- Zero-center voltage scale.
- LI and LV scales.
- Polarity switching circuit.
- Resistance measurements up to 30MΩ.

**Electronic Circuit Testing**

- Optional accessories enable transistor hFE and temperature measurements.
- LI and LV scales.
- Polarity switching circuit.

**SPECIFICATIONS**

Item		3004	3007
DC Voltage	Fullscale Value	0.12/3/12/30(±15)/120/300/1200V (33kΩ/V)	0.12/1.2/3/12/30/120/300/1200V (Max. 1000V)
	Accuracy	±2.5% of fullscale value	
AC Voltage	Fullscale Value	6/30/120/300/1200V (10kΩ/V)	6/30/120/300/1200V (10kΩ/V)(Max. 1000)
	Accuracy	±2.5% of fullscale value	
DC Current	Fullscale Value	30μA/3/30/300mA	30μA/3/30/300mA/6A
	Accuracy	±3% of fullscale value	
AC Current	Fullscale Value	—	—
Resistance	Fullscale Value	3k/300k/3M/30MΩ (25Ω Center Value)	3k/300k/30MΩ (25Ω Center Value)
	Accuracy	±3% of scale length	
DB Scale	Fullscale Value	-10~+17dB/ +15~+31dB	-10~+17dB/ +15~+31dB
Additional Circuits		Capacitance 0.001 to 0.2μF/0.1 to 20μF Transistor hFE : 0 to 600	Temperature Scale : -50 to +200°C (used with 9021) Transistor hFE : 0 to 500 (used with 9091)
Batteries		SUM-3(AA) 006P	SUM-3(AA) 006P
Dimensions & Weight (H×W×D mm)		166×114×57 · 450g	133×93×49 · 330g
Accessories		9042 Test Leads Alligator Clips (1 set) hFE measurement lead 0.5A Fuse	9042 Test Leads (1 set) 0.5A Fuse
Ordering Information		—	—
Optional Accessories		9090-01 Probe (with Fuse Protection) 9085 Carrying Case (Leather)	9090-01 Probe (with Fuse Protection) 9021-01 Thermistor probe 9051 Carrying Case (Leather) 9091 hFE Lead